



Report back: Customize your reports for the ultimate reporting experience

PRESENTED BY Bryan Murray & Katy Munna

Agenda

- Introduction to Report Layout Overrides
- User-Definable Reports
 - Report Library
- Report Menu Configurations
- School Solutions Assistance

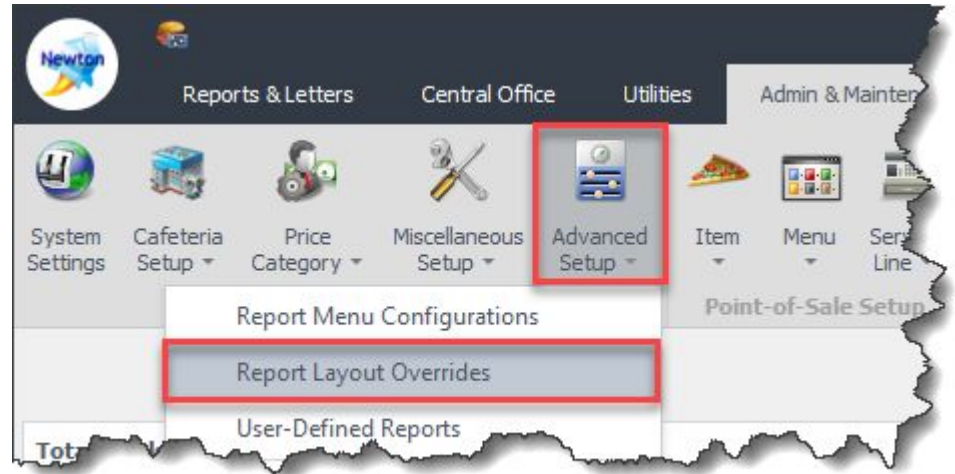


Report Layout Overrides

Simplifying Customization

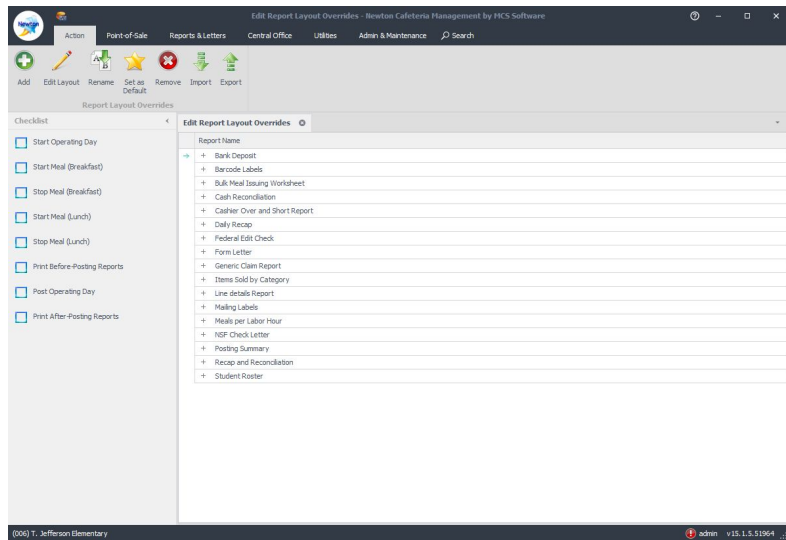
Why Use Report Layout Overrides

- First and simplest way for report customizations
- Starts with standard stock reports and allows customers to modify them according to their specific needs
- Can be added to report menus as alternatives to standard reports



Demonstrating Report Layout Override Techniques

In Software Demonstration



In Software Demonstration

- Adding a Signature Line
- Modifying Header Text, Adding and Removing Columns
- Implementing Grouping and Totals

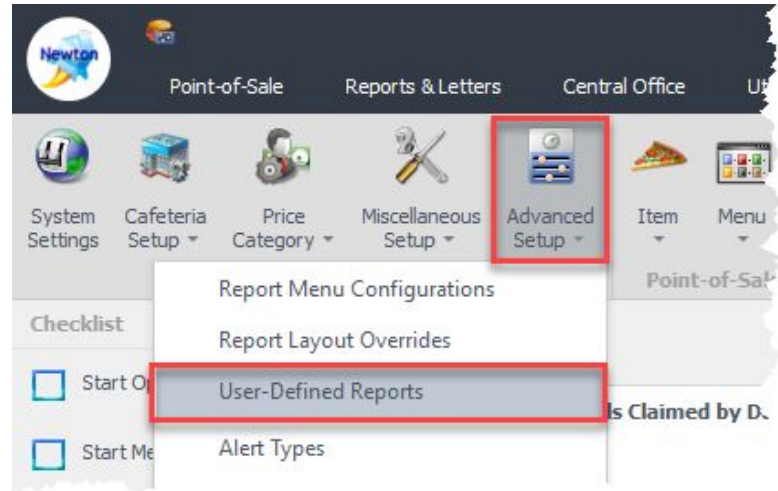


User-Definable Reports

Beyond Standard Templates

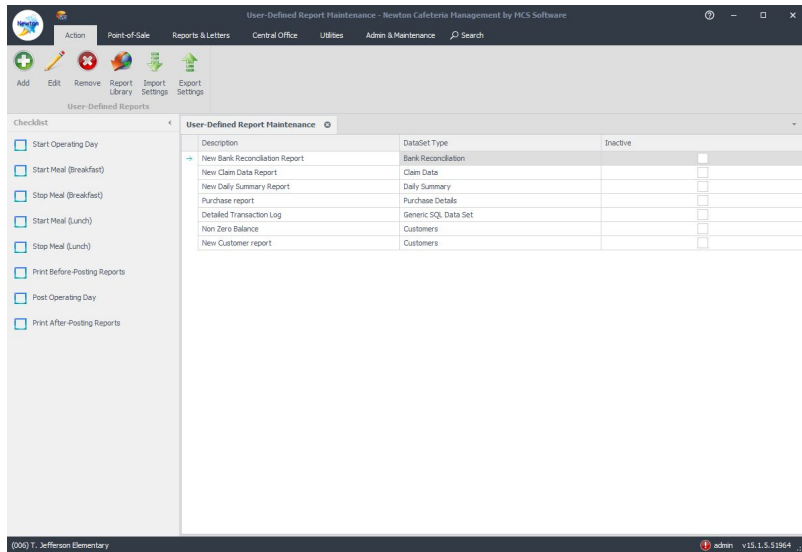
Why Use Report Layout Overrides

- Provides flexibility to create fully customized reports tailored to business needs.
- Enables faster development and deployment of custom reports without waiting for full software releases.
- Reduces dependency on vendor development cycles for new report features.
- Allows users to define report layouts, metrics, and calculations.
- Empowers teams to save and share reusable report templates.



Demonstrating Report Layout Override Techniques

In Software Demonstration



In Software Demonstration

- Accessing and navigating the Report Library
- Utilizing Data Objects
- Configuring datasets for your report
- Designing and formatting report layout
- Previewing and verifying report accuracy
- Using SQL for complex reporting needs

How do I get assistance?

- Self Help – [DevExpress End User Guide](#)
- MCS Support
 - Phone – 888.287.6416
 - Email – mcssupport@e-hps.com
- Custom report questions can be answered as part of normal support
- Custom report development can be quoted on a case by case basis

Thank you

The logo consists of a white circle containing the word "CONNECT" in a sans-serif font. The "N" is orange, while the other letters are purple. The background features abstract, flowing shapes in shades of purple, blue, orange, and pink, with small clusters of dots in corresponding colors.

CONNECT