



CONNECT

What's Coming in 2025

PRESENTED BY Josh Weaver



Newton

- POS UI Refresh
- Generate Emails by Category
- Oauth2 Support for Email
- Serving Times
- View Live Transactions



MCS – POS Refresh Goals

To build a refined,
user-centric experience
with modernized
interface and enhanced
usability that our
customers love.

Point of Sale – UI Refresh

- New UI is currently optional
 - Configurable by Serving Line
- Improved Usability
 - Zoom
 - Student Name – Show more characters
 - Left Hand/Right Hand Support
 - Filtering Improvements
- Improved Visibility into Allergens
 - Larger Font
 - Configurable Countdown
 - Scrolling Requirement

Generate Emails by Category

- Fewer Clicks
- Easier Management for Mixed-CEP Districts
- Manual and Scheduled Jobs

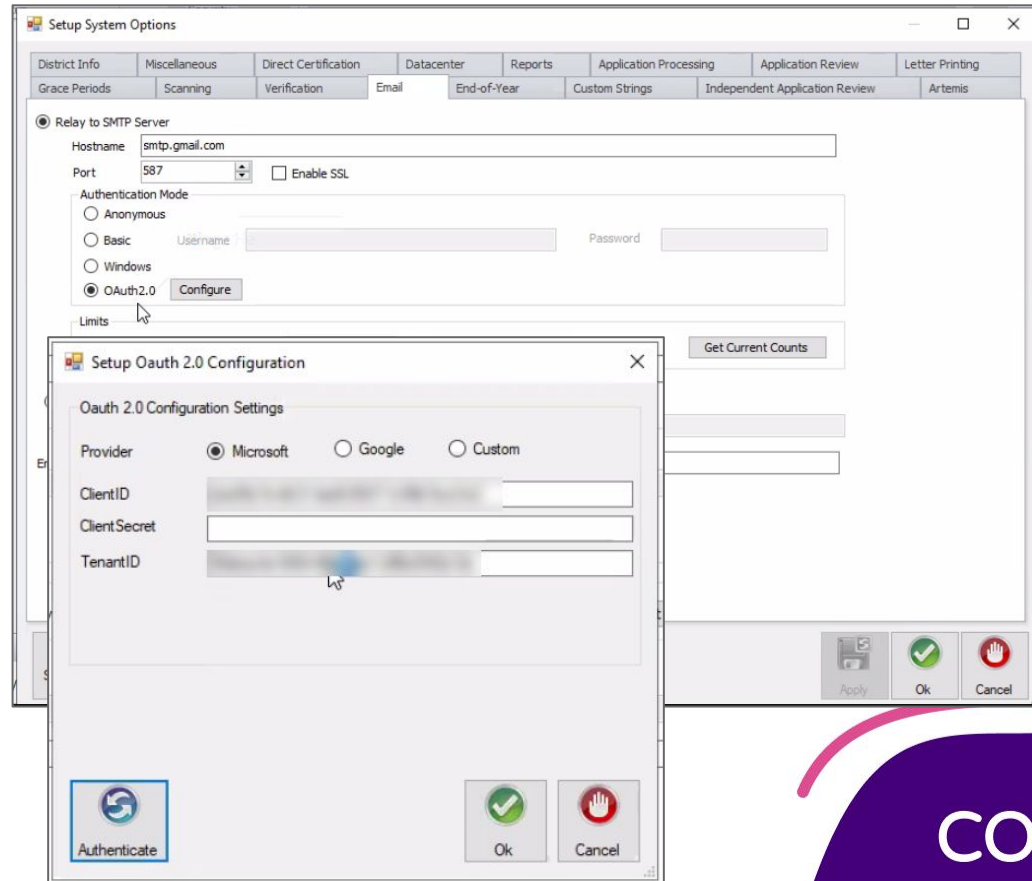
The screenshot shows a 'Generate Letters' dialog box with the following sections:

- Letter Type:** General Letter (dropdown)
- Cafeteria:** Radio buttons for Cafeteria, By Category, and Entire District. The 'By Category' section shows '(000) District Revenues-0000', 'Bank Funds', and '4120'.
- Delivery Method:** Print All (dropdown)
- Balance:** Radio buttons for 'Customers with any balance' (selected), 'Only customers with balances less than \$ 10.00', 'Only customers with balances greater than \$ 50.00', and 'Only customers without enough to buy'. The 'Only customers without enough to buy' section has dropdowns for Breakfast Meals (20), Lunch Meals (20), and Snack Meals (0).
- Miscellaneous Options:** Checkboxes for 'Include Out-Of-Session customers', 'Include customers without recent activity', 'Only include students on a Prior-Year status', 'Include customers with negative/charge balances', 'Include Inactive customers', 'Include Guests', 'Include Multi-Reimbursables', and 'Only include Inactive customers'.
- Specific POS Customer:** Text field with a search button.
- Number of days meals will be served:** Dropdowns for Breakfast Days (20), Lunch Days (20), and Snack Days (20).
- User-Defined Text:** Text area.
- Customer Categories:** Checkboxes for Free Student, Reduced Student, Paying Student, Adult, Employee (Adult), and Special/Other (Adult). Buttons for Students and Adults.
- Grades:** Checkboxes for PK, K, 1, 2, 3, 4, 5, and 6. Buttons for All and None.
- Schools:** List box with All and None buttons.
- Buttons:** Ok and Cancel at the bottom right.

CONNECT

Oauth2 for Email

- Secure method of authenticating to Email Server
- Supports Microsoft, Google, and Custom



Define Serving Times

Targeting Q3 2025

- Per Serving Session
- Alert user at session start
- Can be overridden
 - Permission
 - Release override



CONNECT

View Live Transactions



Serving Counts



Sales



Payment Methods



Troubleshooting

Targeting Q3 2025

- Read-Only
- Troubleshooting
 - Duplicate Meals
 - Excessive Payment
 - Missing Meals
 - Edit Check Violations
- Advanced Filtering Capability

Edison

- Item Import – Improvements
- Import Price Contracts
- CN28
 - Monthly Updates
 - Added Sugars in Nutrient Analysis

Item Importer Improvements

- Convert Local Items to Manufacturer
 - Receive Nutrient/Allergen Updates
- Generate Recipes
 - As-served, e.g. Muffins

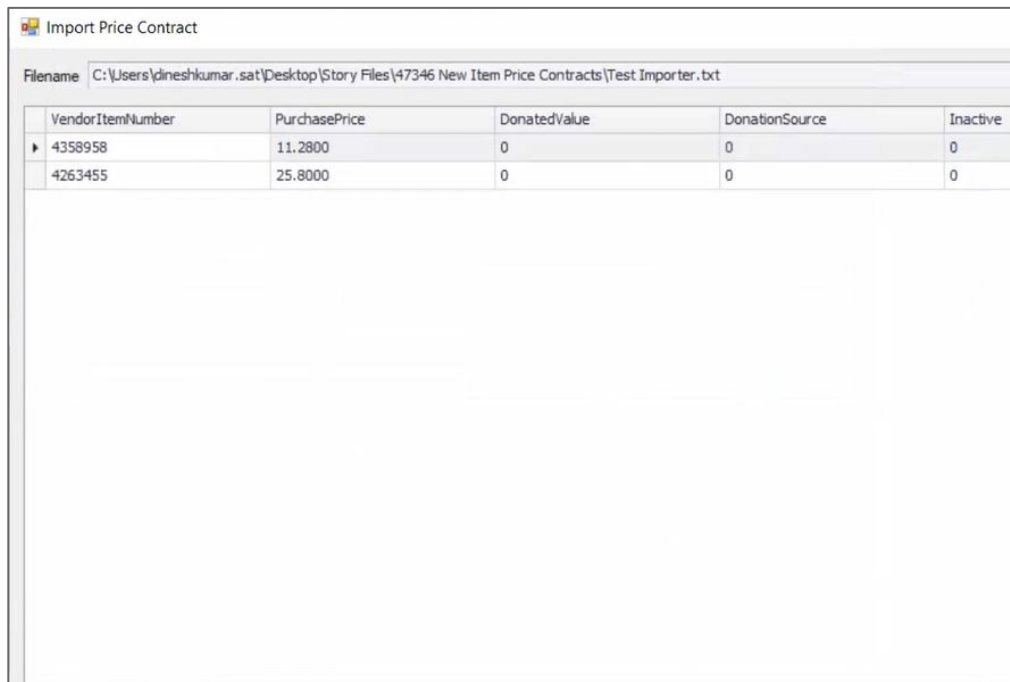
Item Importer Maintenance				
Review Imported Items				
Catalog Number		Item Import		
Catalog Number	Description	Action	Generate Recipe	Item Source
150582	PIZZA 16 IN PEPPERONI	Create	<input checked="" type="checkbox"/>	District
160203	CHEESE SLICED CHEDDAR	Create	<input type="checkbox"/>	District
160207	CHEESE STRING MOZZARELLA IW	Create	<input checked="" type="checkbox"/>	District
150582	PIZZA 16 IN PEPPERONI	Update	<input checked="" type="checkbox"/>	District

Item Importer Maintenance				
Review Imported Items				
Item Maintenance				
Catalog Number		Item Import		
Catalog Number	Description	Action	Item Source	
150578	PIZZA 16 IN CHEESE_U	Convert to GDSN	GDSN Connect	
150582	PIZZA 16 IN PEPPERONI_U	Create	GDSN Connect	
150498	WAFFLE MAPLE BELGIAN IW	Create	GDSN Connect	
110346	POTATOES COMPLETE MASHED MIX	Create	GDSN Connect	
160203	CHEESE SLICED CHEDDAR	Create	GDSN Connect	
160207	CHEESE STRING MOZZARELLA IW	Create	GDSN Connect	
150530	BEEF SHOULDER CLOD RAW		GDSN Connect	
150243	BAR COFFEE CAKE IW	None	GDSN Connect	
150278	DONUT HOLES 2	Update	GDSN Connect	

Import Price Contracts

Target: Start of Year

- New, user-friendly workflow
- Features
 - Add New
 - Update/Append
 - Tracking



The screenshot shows a window titled "Import Price Contract". Below the title bar is a "Filename" field containing the path "C:\\Users\\dineshkumar.sat\\Desktop\\Story Files\\47346 New Item Price Contracts\\Test Importer.txt". Below this is a table with five columns: "VendorItemNumber", "PurchasePrice", "DonatedValue", "DonationSource", and "Inactive". The table contains two data rows. The first row has values 4358958, 11.2800, 0, 0, and 0. The second row has values 4263455, 25.8000, 0, 0, and 0. The table is currently empty of other data.

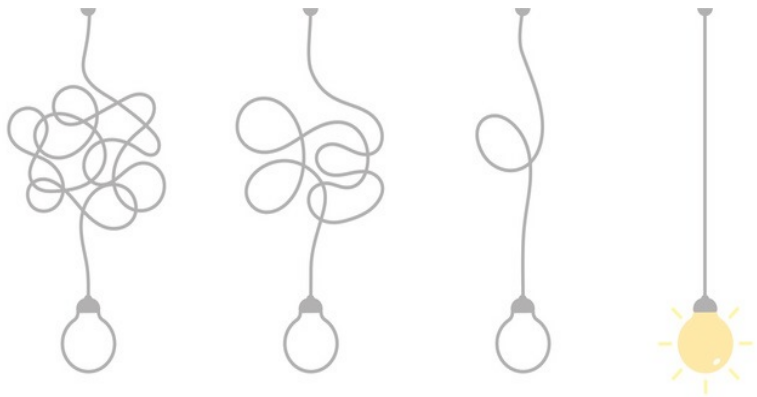
VendorItemNumber	PurchasePrice	DonatedValue	DonationSource	Inactive
4358958	11.2800	0	0	0
4263455	25.8000	0	0	0

Franklin

- DC Matching – Reduce release requests
- OAuth2 Support for Email
- Improved Household Matching

Note: SQL 2016 is recommended for On-Prem customers before End of Year Upgrade

Less Release Requests



Target: Start of Year

- Currently evaluation is done against total number of unmatched records
- New Evaluation will be done against the number of records being matched
- Reduce the number of instances that HSS approval is required

Thank you

The logo consists of a white circle containing the word "CONNECT" in a sans-serif font. The "N" is orange, while the other letters are purple. The background features abstract, flowing shapes in shades of purple, blue, orange, and pink, with small clusters of dots in corresponding colors.

CONNECT